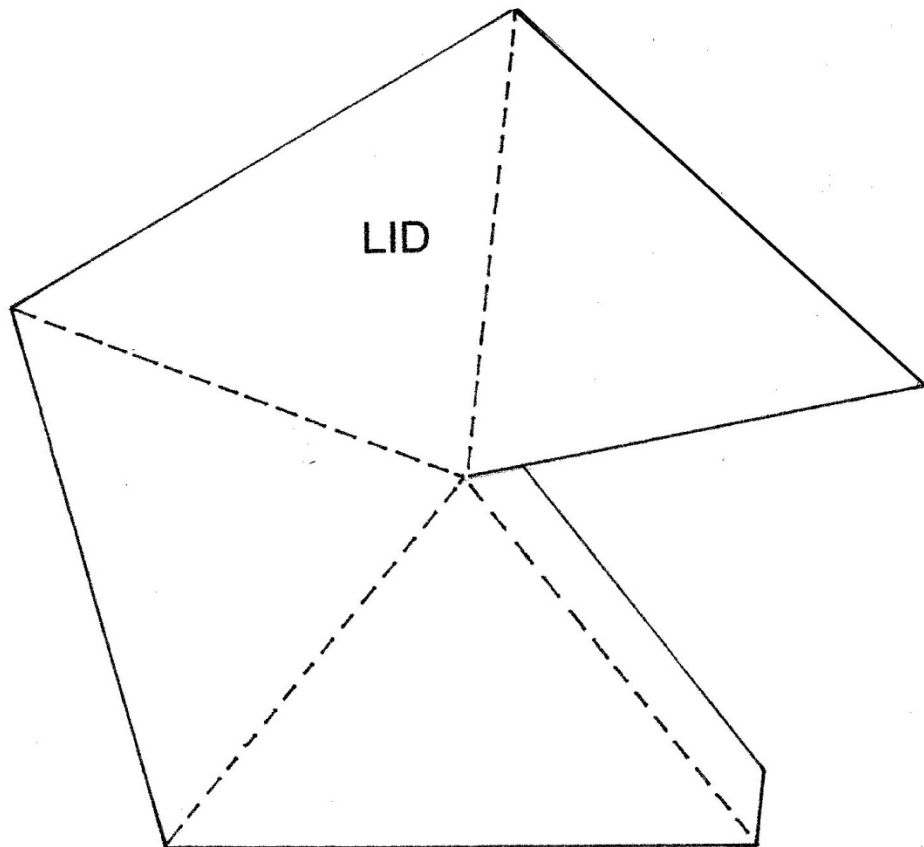
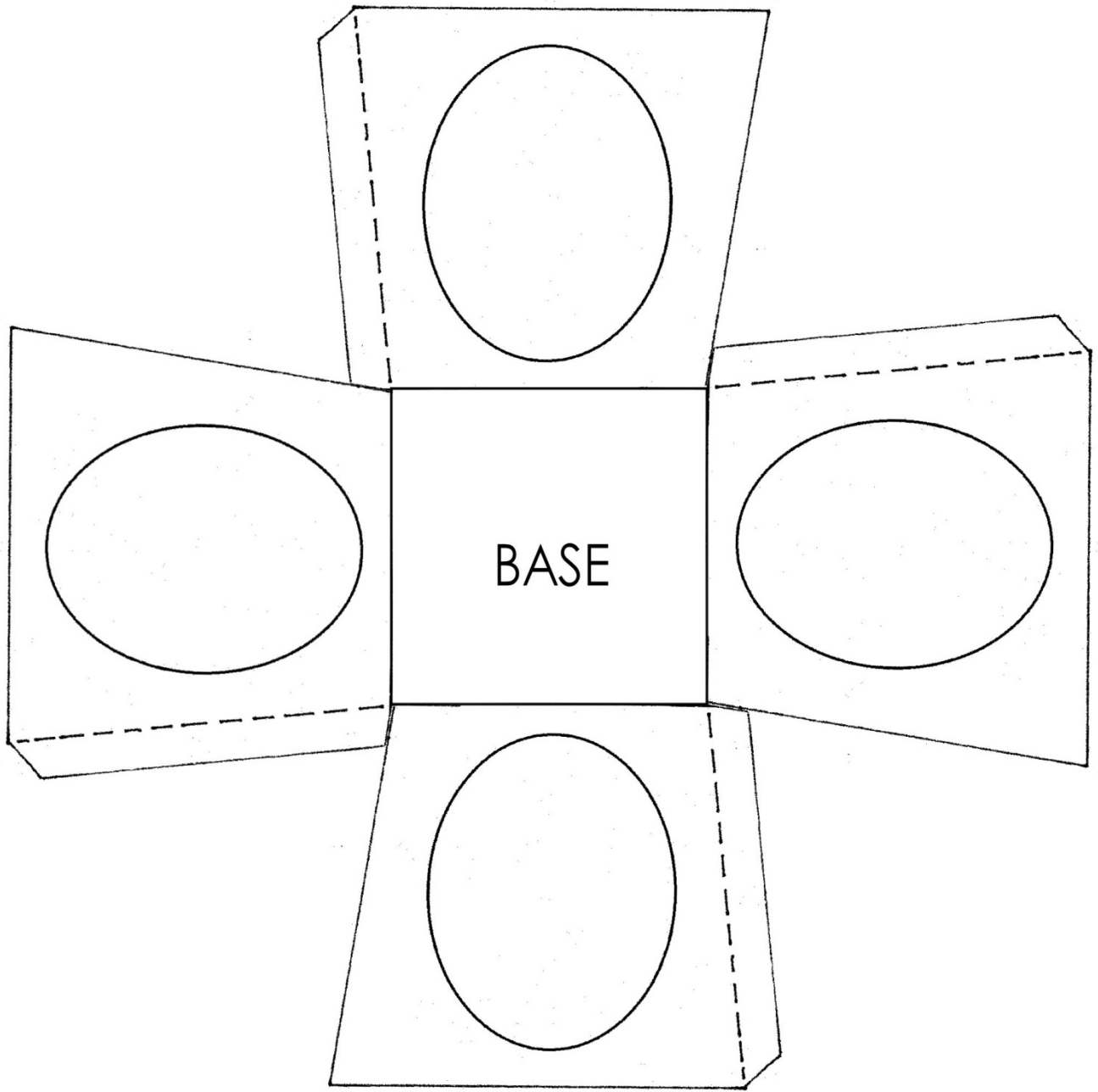


Tea Light Lantern

1. Print template onto the reverse side of your paper. I suggest a medium to heavy weight paper.
2. Cut on the solid lines and score along the dashed lines.
3. Before assembling, die cut or use a kraft knife to cut openings on the base.
4. Adhere tissue paper, if desired, on the inside of the lantern base.
5. Apply 1/4" double sided tacky tape on the tabs, for assembly. Paper adhesive will also work, but requires more patience.





Splitcoaststampers.com
Printable Template © Rebecca Deepröse, 2014
All Rights Reserved. Personal use only.
Electronic/digital transmission, mechanical
reproduction and distribution prohibited.